



Flight Plan & Site Survey

Created using **RPAS Wilco®**

| | |
|--------------------------|--------------------------------------|
| Operation Name: | Mission 02-13-2023 |
| Pilot Name: | ██████████ |
| Pilot Certificate: | ██████████ |
| Flight Start: | February 13, 2023 4:33 PM |
| Flight End: | February 13, 2023 6:33 PM |
| Flight Area (Latitude): | 49° 54' 52.90" N (49.915) |
| Flight Area (Longitude): | 98° 9' 39.40" W (-98.161) |
| Altitude - Radius: | Alt: 700 ft - Rad: 926.0 m (0.5 nm) |
| Airspace: | CONTROLLED |
| FIR - Contact: | CZWG - 204-983-8338 |
| Weather: | -1.3 Celsius - Partially cloudy |

Please ensure you received all required authorizations prior to flight.

Disclaimer

This Site Survey was created using RPAS Wilco by AIM Robotics. The flight plan contained is intended only for RPAS flights on the date/time and location specified. The user accepts all responsibility for the accuracy and completeness of the information contained.

For the complete Terms & Conditions, see

<https://rpswilco.com/#/tnc>



Included

- Site Survey
- Obstacles (if available)
- Nearby Aerodromes
- Canadian Aviation Regulations
- GFA
- Aerodrome Supplements
 - METAR & TAF (if available)
 - NOTAMs
 - CFS

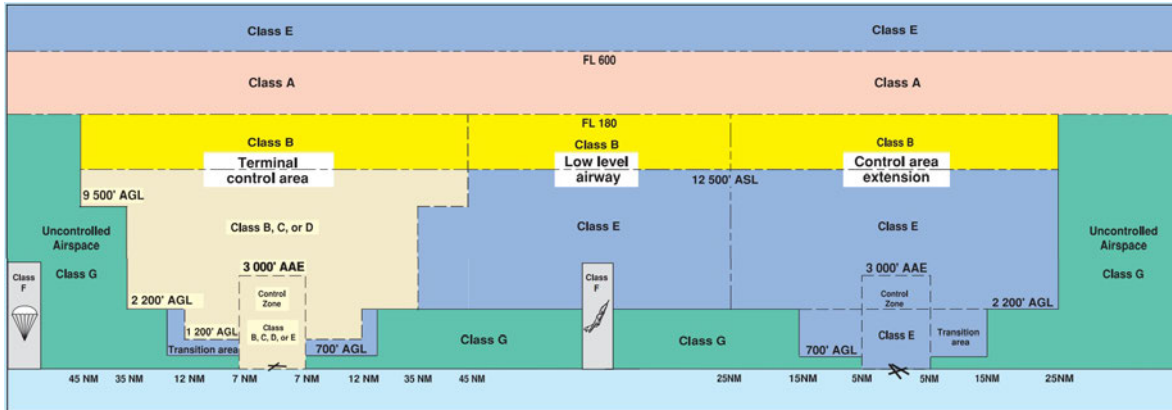
Flight Map



MAP Details

| | Latitude | Longitude |
|--|---------------------------------|---------------------------------|
|  MODEL | 49° 54' 52.90" N (49.915) | 98° 9' 39.40" W (-98.161) |
|  Pilot | 49° 54' 56.50" N (49.9157) | 98° 9' 43.00" W (-98.1619) |

Airspace Classification



Overlying Airspaces

| Class | Name | Floor | Ceiling |
|-------|----------------------------|----------|----------|
| E | Winnipeg, MB CAE | 6500MSL | 12500MSL |
| B | Winnipeg, MB CAE | 12500MSL | 18000MSL |
| B | Winnipeg, MB TCA | 12500MSL | 18000MSL |
| C | Winnipeg, MB TCA | 3000MSL | 4000MSL |
| C | Winnipeg, MB TCA | 4000MSL | 12500MSL |
| D | Southport CZ XPNDR MANDTRY | SFC | 4000MSL |
| E | Southport, MB TA | 700AGL | 12500MSL |
| B | Southport, MB TA | 12500MSL | 18000MSL |

Nearest Aerodromes & Distance from Operation

| | | | | |
|---|-------------|--------------|-----------|----------|
| SOUTHPORT (CYPG AERODROME/HELIPORT Cert) | Lat: 49.903 | Long: 98.274 | 8.2 KM | 4.43 NM |
| PORTAGE LA PRAIRIE (NORTH) (CJZ2 AERODROME Reg) | Lat: 49.993 | Long: 98.303 | 13.383 KM | 7.23 NM |
| MACDONALD (CJU3 AERODROME Reg) | Lat: 50.096 | Long: 98.501 | 31.576 KM | 17.05 NM |
| STARBUCK (CKJ7 AERODROME Reg) | Lat: 49.706 | Long: 97.68 | 41.587 KM | 22.46 NM |

Weather Information for Mission Day

Summary: Partly cloudy throughout the day.

| Condition | Temperature | Feels Like | Precipitation | Visibility | Cloud Coverage | Wind Speed | Humidity |
|------------------|-------------|-------------|---------------|------------|----------------|------------|----------|
| Partially cloudy | 1.3 Celsius | 5.9 Celsius | 0.0 % | 16.2 Km | 35.0 % | 27.4 kph | 76.0 % |

Canadian Aviation Regulations

Division III — General Operating and Flight Rules

For full listing please visit <https://laws-lois.justice.gc.ca/eng/regulations/SOR-96-433/FullText.html#s-901.27>

Visual Line-of-sight

- **901.11 (1)** Subject to subsection (2) no pilot shall operate a remotely piloted aircraft system unless the pilot or a visual observer has the aircraft in visual line-of-sight at all times during flight.
- **(2)** A pilot may operate a remotely piloted aircraft system without the pilot or a visual observer having the aircraft in visual line-of-sight if the operation is conducted in accordance with a special flight operations certificate — RPAS issued under section 903.03.

Procedures

- **901.23 (1)** No pilot shall operate a remotely piloted aircraft system unless the following procedures are established:
 - **(a)** normal operating procedures, including pre-flight, take-off, launch, approach, landing and recovery procedures; and
 - **(b)** emergency procedures, including with respect to
 - **(i)** a control station failure,
 - **(ii)** an equipment failure,
 - **(iii)** a failure of the remotely piloted aircraft,
 - **(iv)** a loss of the command and control link,
 - **(v)** a fly-away, and
 - **(vi)** flight termination.
- **(2)** If the manufacturer of the remotely piloted aircraft system provides instructions with respect to the topics referred to in paragraphs (1)(a) and (b), the procedures established under subsection (1) shall reflect those instructions.
- **(3)** No pilot shall conduct the take-off or launch of a remotely piloted aircraft unless the procedures referred to in subsection (1) are reviewed before the flight by, and are immediately available to, each crew member.
- **(4)** No pilot shall operate a remotely piloted aircraft system unless the operation is conducted in accordance with the procedures referred to in subsection (1).

Site Survey

901.27 No pilot shall operate a remotely piloted aircraft system unless, before commencing operations, they determine that the site for take-off, launch, landing or recovery is suitable for the proposed operation by conducting a site survey that takes into account the following factors:

- **(a)** the boundaries of the area of operation;
- **(b)** the type of airspace and the applicable regulatory requirements;
- **(c)** the altitudes and routes to be used on the approach to and departure from the area of operation;
- **(d)** the proximity of manned aircraft operations;
- **(e)** the proximity of aerodromes, airports and heliports;
- **(f)** the location and height of obstacles, including wires, masts, buildings, cell phone towers and wind turbines;
- **(g)** the predominant weather and environmental conditions for the area of operation; and
- **(h)** the horizontal distances from persons not involved in the operation.

Operations at or in the Vicinity of an Aerodrome, Airport or Heliport

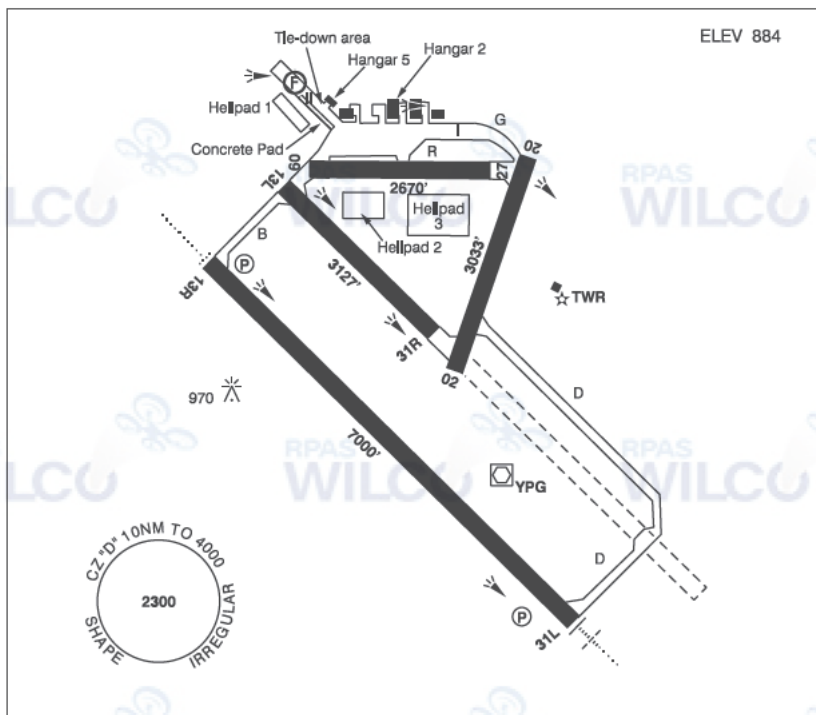
- **901.47 (1)** No pilot shall operate a remotely piloted aircraft at or near an aerodrome that is listed in the *Canada Flight Supplement* or the *Water Aerodrome Supplement* in a manner that could interfere with an aircraft operating in the established traffic pattern.
- **(2)** Subject to section 901.73 no pilot shall operate a remotely piloted aircraft at a distance of less than
 - **(a)** three nautical miles from the centre of an airport; and
 - **(b)** one nautical mile from the centre of a heliport.
- **(3)** No pilot shall operate a remotely piloted aircraft at a distance of less than three nautical miles from the centre of an aerodrome operated under the authority of the Minister of National Defence unless the operation is conducted in accordance with a special flight operations certificate — RPAS issued under section 903.03.

Records

- **901.48 (1)** Every owner of a remotely piloted aircraft system shall keep the following records:
 - **(a)** a record containing the names of the pilots and other crew members who are involved in each flight and, in respect of the system, the time of each flight or series of flights and
 - **(b)** a record containing the particulars of any mandatory action and any other maintenance action, modification or repair performed on the system, including
 - **(i)** the names of the persons who performed them,
 - **(ii)** the dates they were undertaken,
 - **(iii)** in the case of a modification, the manufacturer, model and a description of the part or equipment installed to modify the system, and
 - **(iv)** if applicable any instructions provided to complete the work.
- **(2)** Every owner of a remotely piloted aircraft system shall ensure that the records referred to in subsection (1) are made available to the Minister on request and are retained for a period of
 - **(a)** in the case of the records referred to in paragraph (1)(a), 12 months after the day on which they are created; and
 - **(b)** in the case of the records referred to in paragraph (1)(b), 24 months after the day on which they are created.
- **(3)** Every owner of a remotely piloted aircraft system who transfers ownership of the system to another person shall, at the time of transfer, also deliver to that person all of the records referred to in paragraph (1)(b).

PORTAGE LA PRAIRIE / SOUTHPORT MB

CYPG



| | |
|-----------------|--|
| REF | N49 54 11 W98 16 26 4S 4°E (2016) UTC-6(5) Elev 884' VTA A5007 LO4 HI4 CAP |
| OPR | Southport Aerospace Centre Inc 204-428-6030 14-23Z± exc stat hols, O/T by NOTAM. Mil flt ops 204-428-2522 Cert |
| PF | B-1,2 (ltd hrs), 5,7 C-2,3,4,6 |
| FLT PLN | Pilots to open/close VFR flt plan with Edmonton rdo, FISE or by phone. |
| FIC | Edmonton 866-WXBRIEF (Toll free within Canada) or 866-541-4102 (Toll free within Canada & USA) |
| WX | 204-428-2444 ltd hrs (see opr). O/T for mil only JMC 1-800-WXMETEO (996-3836). METAR dur flt ops. TAF dur flt ops, issue times depending on mil requirements. AUTO (see COMM). |
| SERVICES | Call out chg may be levied for one or more svcs |
| FUEL | 100LL, JA-1 (FSII avbl), SP 14-04Z± Mon-Fri exc hols. Ctc Tran Svcs 204-428-2435 O/T PN 204-872-0570 |
| OIL | 80, 100, Turbo Oil 2380 |
| ARFF | PARTICIPATING CAT 2 14-23Z± Mon-Fri exc hols, O/T 204-870-2004 |
| S | 1,4,5,6 |
| PVT ADV | Tran Svcs 123.0 |

MANITOBA

AERODROME / FACILITY DIRECTORY

PORTAGE LA PRAIRIE / SOUTHPORT MB (Cont'd)

CYPG

| | |
|--|--|
| RWY DATA | Rwy 13R(130°)/31L(310°) 7000x148 ASPH Rwy 13L(130°)/31R(310°) 3127x98 ASPH Rwy 09(085°)/27(265°) 2670x98 ASPH Rwy 02(015°)/20(195°) 3033x150 ASPH RESA: 13R/31L 984' |
| RWY CERT | Rwy 13R/31L AGN IIIA Rwy 13L/31R AGN II Rwy 09/27 AGN II Rwy 02/20 AGN IIIA |
| TWY CERT | Twy R AGN II |
| HELI DATA | FATO 87' x 87' CONC Helipad 1: 607' x 148' turf/snow Helipad 2: 492' x 197' turf/snow Helipad 3: 656' x 328' turf/snow |
| APRON | No itinerant acft on Apron I. I itinerant acft prkg S of hg 5 on Apron II. Jet and large acft prkg on concrete pad on S side of Apron II. Heli FATO on S side of Apron II. Light acft use tie-downs on N side of Apron II. Parking Fees. |
| RCR | Opr CRFI, Mil Flt Ops 204-428-2444, 14-23Z†, exc stat hols O/T by NOTAM. PLR/PCN ctc Opr. Rwy 09/27 wt rstd to 15,500 lbs. Rwy 13R/31L PLR 7.3. Call out chgs. |
| LIGHTING | 02-(TE ME), 20-(TE ME), 13R-AO(TE HI) P2, 31L-AN(TE HI) P2 ARCAL-126.2 type K |
| COMM | <p>ATIS 120.85 14-23Z† Mon-Fri exc hols</p> <p>GND 121.7 14-23Z† Mon-Fri exc hols</p> <p>TWR 126.2 (V) 14-23Z† Mon-Fri exc hols</p> <p>ATF ftc 126.2 23-14Z† Mon-Fri, H24 Sat, Sun & hols 10NM 4000 ASL</p> <p>TML Winnipeg 121 0</p> <p>MIL 3 CFFTS Ops 204-428-4139</p> <p>AUTO 123.175</p> |
| NAV | All Nav aids Unmonitored when Twr clsd. |
| NDB VOR/DME ILS | PORTAGE PG 353 (L) N49 50 30 W98 10 47 Pvt PORTAGE YPG 114.6 Ch 93 N49 53 59 W98 16 02 (902') Pvt IPG 109.7 (Rwy 31L) Pvt |
| PRO | Rgt hand circuits Rwy 13R, 20, 27 & 31R (CAR 602.96). Circuit alt 02/20, 09/27 & 13L/31R 1900 ASL, 13R/31L 2500 ASL. Arr ctc twr 126.2 prior to "D" CZ. VFR circuits & multiple IFR apch for tng by itinerant acft may be rstd due lcl tfc. Extv heli tng NE quad CZ wi hin 5NM. Avoid satellite fld (Grabber Green) N49 54 52 W98 09 38, 4NM NE (see VTPC) or cross at 2500 ASL or above. |
| HELI | Dep & arr FATO 1 on Apron II as directed by twr depicted rtes (see VTPC). Not above 1400 ASL til clear of circuits. |
| CAUTION | Extv flt tng in the lcl area. Hrs of ops may be extended by NOTAM. Ocsl extv ngf flt tng activity. Attempt ctc with Southport twr 126 2 prior to entering CZ. Lgtd twr 1010 ASL (150 AGL) aprx 0.9NM N of A/D. |

MANITOBA

AERODROME/FACILITY DIRECTORY

PORTAGE LA PRAIRIE (NORTH) MB

CJ22

| | | |
|--|---|--|
| REF | N49 59 36 W98 18 12 Adj NW 4°E (2017) UTC-6(5) Elev 860' VTA A5007 | |
| OPR | Portage Flying Club Rick Yaskiw 204-857-4212 Reg | |
| PF | C-1,2,3,4,5,6 A/D clsd in win | |
| FLT PLN FIC | Pilots to open/close VFR flt plan with Edmonton rdo, FISE or by phone. Edmonton 866-WXBRIEF (Toll free within Canada) or 866-541-4102 (Toll free within Canada & USA) | |
| SERVICES FUEL S | 100LL PN 4,5,6 | |
| RWY DATA | Rwy 18(182°)/36(002°) 2048x75 turf Rwy 14(144°)/32(324°) 2971x90 turf Rwy 09(093°)/27(273°) 1952x75 turf Opr ltd win maint | |
| COMM ATF | ftc 122.8 5NM 3000 ASL excluding the YPG Class "D" CZ. | |
| PRO | Rgt hand circuits Rwy 18, 27 & 32 (CAR 602.96), circuit hgt 1600 ASL. Aprt in close proximity to Southport class "D" CZ, for flt info ctc Southport TWR. | |
| CAUTION | Bldgs and P-lines 1000' N thrd Rwy 14 and parallel to E side Rwy 14. | |

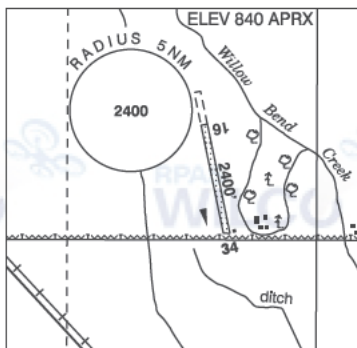
MANITOBA

AERODROME/FACILITY DIRECTORY

MACDONALD MB

CJU3

| | |
|-----------------|--|
| REF | N50 05 47 W98 30 03 2NW 6°E UTC-6(5) Elev 840' aprx A5007 |
| OPR | T.R. Bailey 204-274-2170 Reg |
| PF | B-1 D-2,3,4,5,6 |
| FLT PLN | Pilots to open/close VFR flt plan with Edmonton rdo, FISE or by phone. FIC Edmonton 866-WXBRIEF (Toll free within Canada) or 866-541-4102 (Toll free within Canada & USA) |
| RWY DATA | Rwy 16(158°)/34(338°) 2400x60 gravel/turf |
| RCR | Opr No win maint |
| COMM | ATF tfc 123.2 5NM 3900 ASL |



MANITOBA

AERODROME / FACILITY DIRECTORY

STARBUCK MB

CKJ7

| | | |
|-----------------|---|--|
| REF | N49 42 22 W97 40 50 4SW 4°E (2015) UTC-6(5) Elev 785' VTA A5007 | |
| OPR | Winnipeg Gliding Club 204-735-2868 Reg | |
| PF | C-1,2,5 D-3,4,6 | |
| FLT PLN | Pilots to open/close VFR flt plan with Edmonton rdo, FISE or by phone. | |
| FIC | Edmonton 866-WXBRIEF (Toll free within Canada) or 866-541-4102 (Toll free within Canada & USA) | |
| RWY DATA | Rwy 09(087°)/27(267°) 1900x125 turf Rwy 13(130°)/31(310°) 3000x275 turf Rwy 18(177°)/36(357°) 2550x200 turf | |
| RCR | Opr No win maint. Rwys ruf, soft when wet. | |
| COMM | | |
| ATF | ffc 123.4 5NM 2800 ASL | |
| PRO | Gliders fly left hand circuits. Powered acft fly rgt hand circuits (CAR 602.96). Mode C Transponder Mandatory - Acft operating in Winnipeg Class C CZ or TCA require a discrete transponder code which must be obtained by filing a flt plan, flt itinerary or by ctc Winnipeg ACC 204-984-5979 at least 15 min prior to entering. | |